

Emergency Lighting

Emergency Lighting

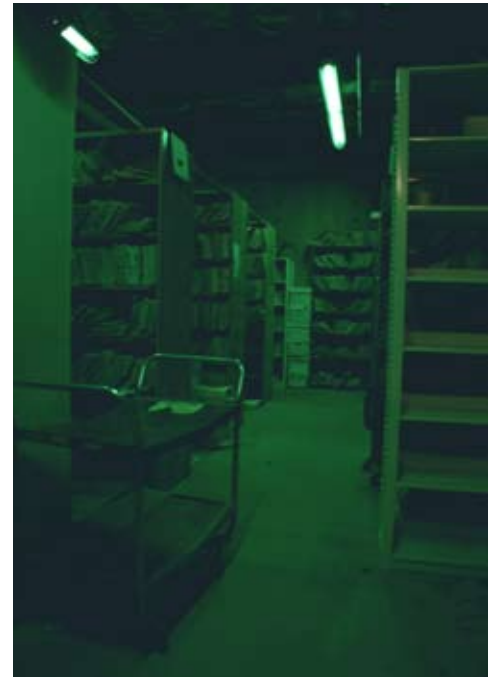
Emergency lighting: without electricity, without batteries, with very little maintenance. Installation is simple – just open the diffuser on your fluorescent fixture and place the light bars behind the bulbs. Strong magnets hold them in place. The close proximity to the bulbs supercharges the Safe Glow Emergency Light Bars. When lights go out, they go on and allow occupants to see their way out of the room. A full complement of photoluminescent lights (4) provides 20 - 30 minutes of back-up lighting. Although they are not bright enough to meet code, they are the perfect solution for rooms where emergency lighting is needed, but not required by code. They perform very well in individual offices, conference rooms, restrooms, storage or file rooms. They also perform as a fail-safe backup for battery and back-up generator based emergency lighting in corridors and stairwells..

Features:

- 2 – 4 bars per fixture needed
- Magnetic backed for easy installation
- Can be installed using screws or adhesive in non-metallic fixtures
- Provides 20 – 30 minutes of emergency lighting

Specifications:

- Suggested Mounting Height – 8 feet
- Operating Life – 25 years
- Warranty – 5 year limited warranty
- Mounting Configuration – to be mounted inside fluorescent light fixture next to/behind the bulb



Caution: May not be suitable for all applications. Your light fixture diffuser may have a substantial impact on the amount of light projected to the floor. Test for suitability prior to use. These products do not meet current emergency lighting code and should only be used as a back up to required emergency lighting.



www.safeglow.com

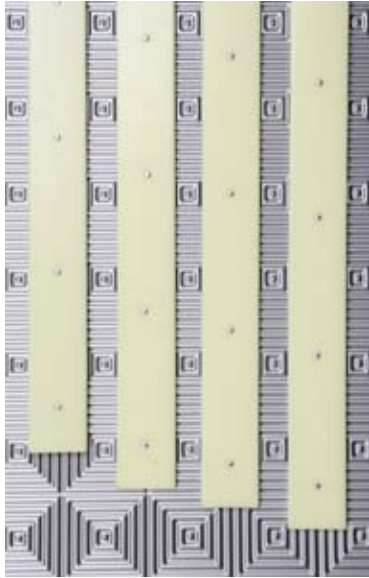
714-223-9700

Safe Glow Corporation
18022 Yorba Linda Blvd., Yorba Linda, CA 92886-3904



Emergency Lighting

High-performance Emergency Lighting



Product Number
HPEL-01



Dimensions:
L 22" x H 2" x T.27"

Mounting Hardware:
Comes complete with high performance magnets for easy installation.
Adhesive and mechanical fastening options are available.
Please specify when ordering

Description:
Photoluminescent face with rigid aluminum back plate. Comes with 5 magnets on the back plate for installation inside your light fixture.

Weight:
12 ounces

Caution: May not be suitable for all applications. Your light fixture diffuser may have a substantial impact on the amount of light projected to the floor. Test for suitability prior to use. These products do not meet current emergency lighting code and should only be used as a back up to required emergency lighting.



www.safeglow.com

714-223-9700

Safe Glow Corporation
18022 Yorba Linda Blvd., Yorba Linda, CA 92886-3904



Safe Glow™ is a trademark of Safe Glow Corporation. © Safe Glow Corporation 2009